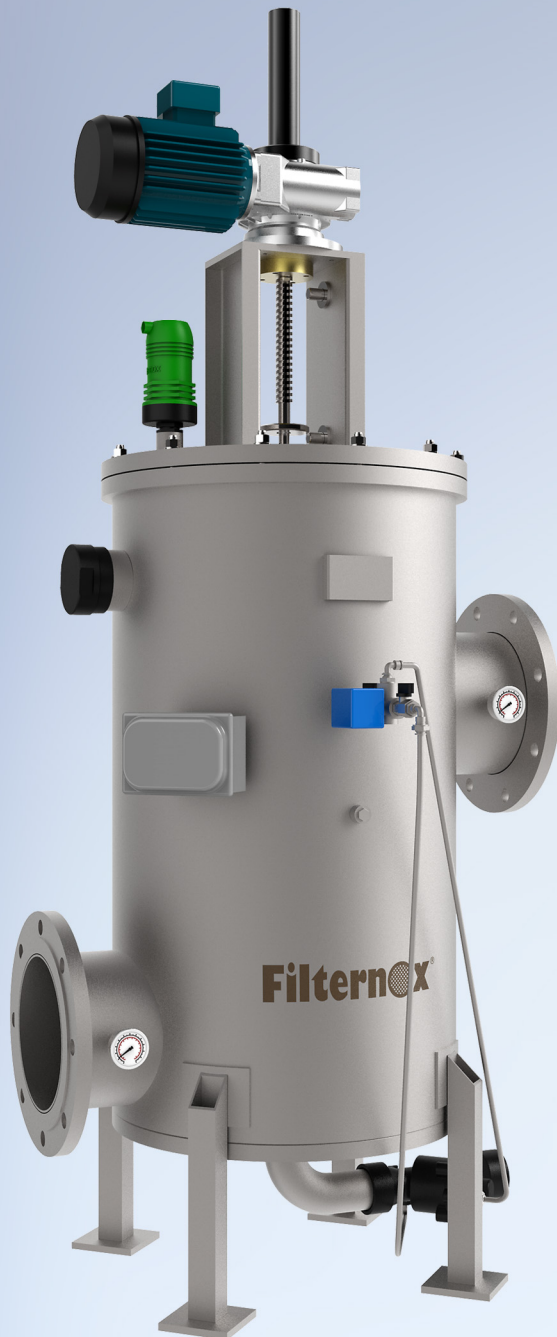


# SPECIAL SPT-MR

## Maximum Efficiency Minimum Footprint



+ **Filternox**® Special SPT-MR is suitable for applications that require medium to large filtration capacity.

+ Vertical installation and small footprint combined with back-flushing system and high filtration performance makes **Special SPT-MR** an absolute necessity in systems which are required to do fine filtration in a limited space.

### General Technical Specifications

<b>Body Material</b> AISI 304L, AISI 316L	<b>Max. Operating Temperature</b> 60°C / 90°C	<b>Back-Flush Water Consumption</b> 100-200 l / back-flush
<b>Screen Material</b> AISI 316L	<b>Headloss at Max. Flow Rate</b> 0.2 bar	<b>Fine Screen Range</b> 10-3000 micron
<b>Max. Operating Pressure</b> PN10 / PN16	<b>Back-Flush Time</b> 20-30 s	<b>Control System</b> Electric
<b>Min. Inlet Pressure Required During Back-Flush</b> 2 bar	<b>rpm of Cleaning Mechanism</b> Adjustable	

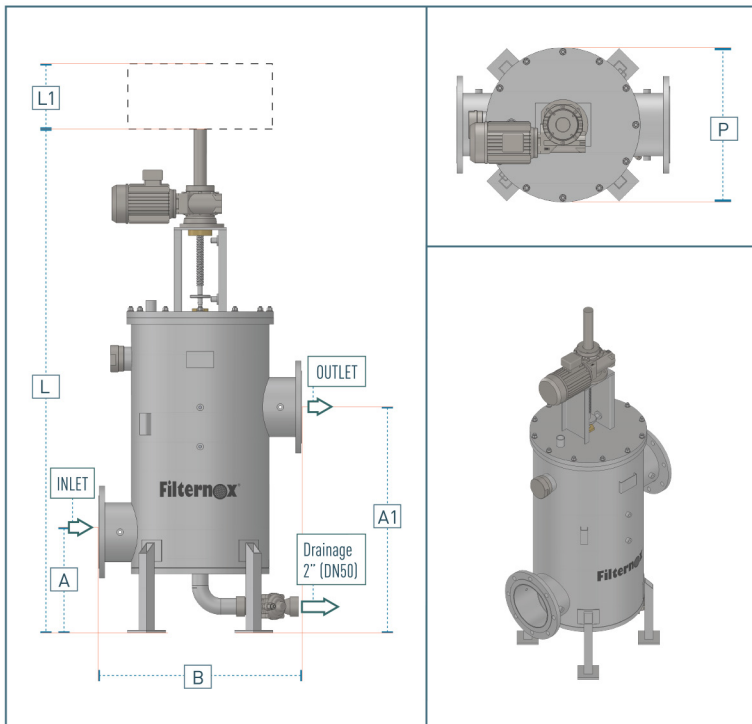
For different pressure and material requirements, please contact Antel-Filternox.

### Optional Features

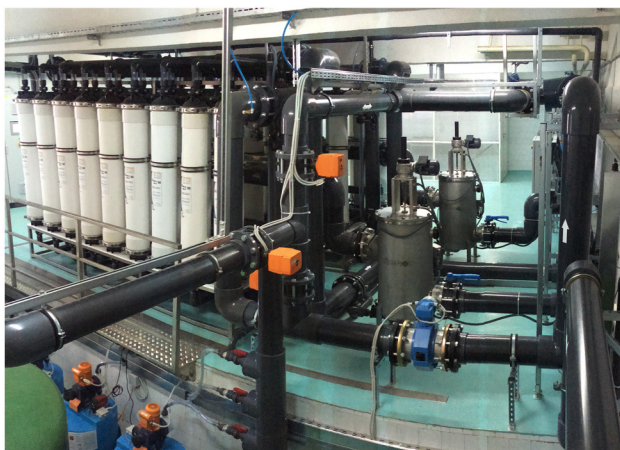
**Alternative Energy Sources**  
Solar Energy

**Remote Control and Monitoring**  
PLC, PC,  
Mobile Devices,  
Filternox Head Office

## SPECIAL SPT-MR Model Dimensions



Model	Inlet-Outlet Diameter		Dimensions						Weight		Flow Rate	Filtration Area
			A	A1	B	L	L1	P	Empty	Full		
	inch	mm	mm						kg		m <sup>3</sup> /h	cm <sup>2</sup>
SPECIAL SPT 114304-MR	4	100	450	950	596	2005	300	380	125	210	up to 120	4800
SPECIAL SPT 114306-MR	6	150	450	950	616	2005	300	380	130	220	up to 160	4800
SPECIAL SPT 116308-MR	8	200	450	950	666	2005	300	430	150	260	up to 240	6000
SPECIAL SPT 118310-MR	10	250	500	1000	757	2055	300	482	165	295	up to 400	7200
SPECIAL SPT 120308-MR	8	200	450	950	768	2005	300	533	190	345	up to 360	8100
SPECIAL SPT 118410-MR	10	250	500	1100	757	2255	500	482	185	340	up to 500	9600
SPECIAL SPT 120410-MR	10	250	500	1100	768	2255	500	533	235	420	up to 540	10800
SPECIAL SPT 124414-MR	14	350	550	1200	970	2355	500	635	330	600	up to 800	12800



- Tolerance value for given data is according to DIN ISO 2768-1(v).
- For options with larger filtration area, please contact Antel-Filternox.

